

Treasure Chest with Faux Alligator Technique  
Club MED/Special Trade at 2009 June TAC Seminar by KellyRae Cooper  
[mail@kellyrae.com](mailto:mail@kellyrae.com)  
<http://sassyrubberartists.com>



I received the paper template about 7 years ago, but I don't know who originated it. My apologies up front and if this is your template, please let me know and I'll add an acknowledgement to the handout.

Copy template onto 8 ½ x 11 sheets of cardstock (it won't copy onto black cardstock, however, by tracing the template and following the clues on the template, it is easy enough to make black treasure chests)

Cut on the solid lines and score on the dotted lines (TIP: I used the ScorPal to make my score lines, however, since the 'mountain' score lines needed to be on the inside, I used the template as a guide to make my score line on the front of my cardstock...the side that did not have the dotted score lines...it sounds a lot more intimidating than it actually is)



**TO CREATE THE FAUX ALLIGATOR TECHNIQUE:**

Mask bottom and side tabs with sticky notes (also mask large rectangle area between the two side "humps")



Brayer Versamark ink onto open areas; then sprinkle clear embossing powder onto the Versamarked areas and remove sticky notes (**DO NOT heat** embossing powder at this time)

Use a stylus to draw lines through the embossing powder (creating a cross-hatch grid pattern)



**NOW heat** embossing powder

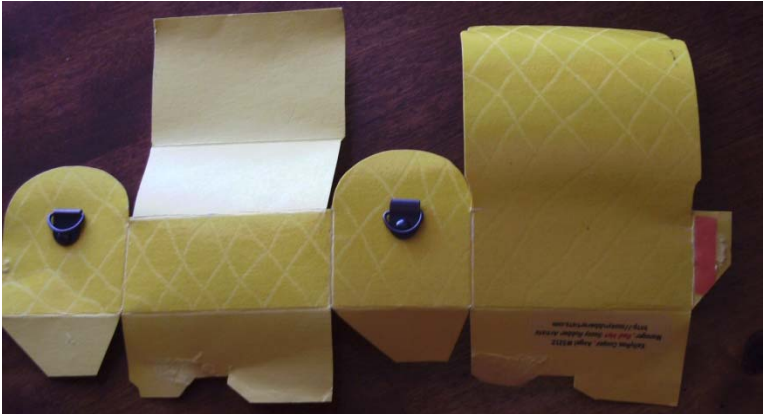


If desired, add hardware trunk handles (photo loops) before assembling box

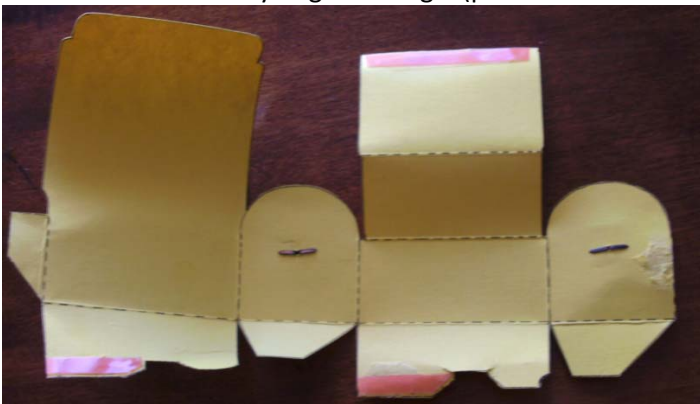


**TO ASSEMBLE TREASURE CHEST:**

Apply red tape to the front of the side tab (place it closest to the treasure chest side)



Apply red tape to the back of the two large bottom tabs (at the bottom edge and only on the large section) and to the back of the NON-curved edge rectangle (place it closest to the edge).



Peel off the protective covering from the side tab and adhere to inside of matching side. Fold the treasure chest back and forth to create a rectangle 'box' shape.



Peel off the protective covering from the bottom tabs; fold the two short bottom tabs in and then fold the two longer bottom tabs (with the red tape); press firmly from the inside of the box to adhere securely



Peel off the protective covering from the rectangle piece and fold it inside the box



Finished treasure chests

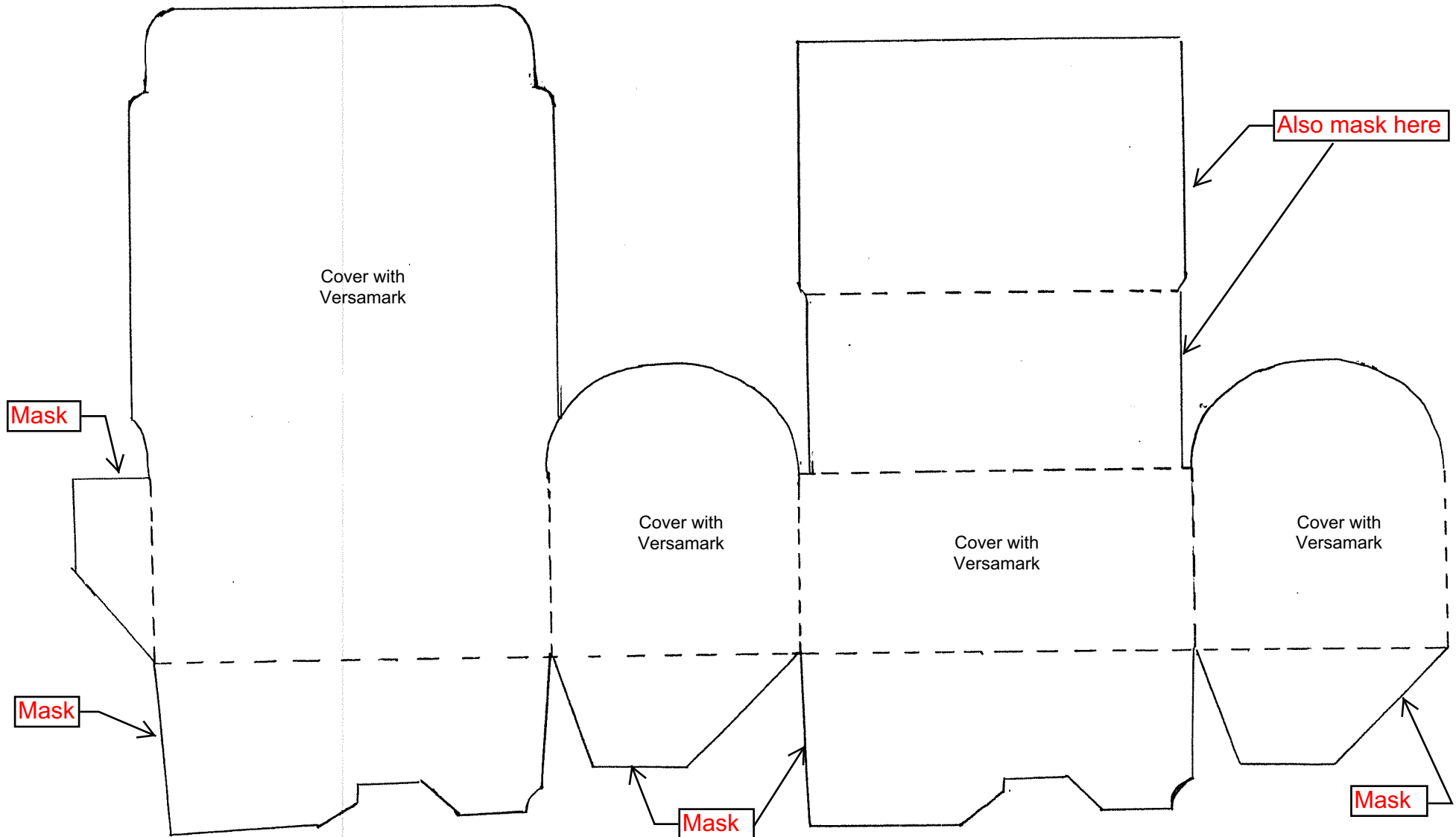




**TREASURE BOX WITH THE FAUX ALLIGATOR TECHNIQUE (KellyRae Cooper - Seminar 09) mail@kellyrae.com**

1. Cut on the solid lines and score on the dotted lines.
2. Mask the tabs with sticky notes (also mask the large rectangle area between the two "humps" of the sides).
3. Brayer Versamark ink onto open areas.
4. Sprinkle clear embossing powder onto Versamark; remove sticky notes (DO NOT heat embossing powder).
5. Use a stylus to draw lines through the embossing powder (creating a cross-hatch grid pattern); NOW heat embossing powder.
6. If desired, add hardware before assembling box.

she used the ScorPal [http://clearlyistamp.typepad.com/my\\_weblog/2009/01/tutorial-tuesday---treasure-chest.html](http://clearlyistamp.typepad.com/my_weblog/2009/01/tutorial-tuesday---treasure-chest.html)  
 and she added straps! [http://clearlyistamp.typepad.com/my\\_weblog/2009/06/its-for-the-boys.html](http://clearlyistamp.typepad.com/my_weblog/2009/06/its-for-the-boys.html)



Treasure Chest Box

